

KX Driver v8.5 Release Notes

Subject:	Firmware Update
Model:	KX DRIVER

KX Driver v8.6A.1412

Type	File name	Version
Driver	Kx86_UPD_8.6A.1412_en_RC2_signed	8.6A.1412

Details of changes

No	Item	Content
1	Security enhancement	<p>The following CWE (Common Weakness Enumeration) is supported as security enhancement of the installer.</p> <p style="color: blue;">- CWE-427: Uncontrolled Search Path Element</p> <p style="color: blue;">[CVE Reference No.] No CVE No. is supported this time.</p> <p style="color: blue;">*There is no direct vulnerability risk.</p>
2	Corrective measure for configuration file failure	The configuration file does not include the model names of ECOSYS MA2600cwf series or TASKalfa MZ7001ci series. This has been corrected.
3	Corrective measures for [Color] setting failure	In ECOSYS MA2600cwf series and TASKalfa MZ9500ci series, when the mouse cursor is hovered over [Color] setting icon on [Quick Print] screen and the [Apply] button is clicked, the internal setting is changed to [Print grays with black toner] even though [Full color] is selected in the UI settings. This has been corrected.
4	Corrective measures for non-display of [SNMP settings] button	With ARM devices, [SNMP Settings] button is not displayed on [Administrator Settings] screen. This has been corrected.
5	Corrective measures for [User Login] tab not being displayed	In some models, [User Login] tab is not displayed on [Administrator Settings] screen. This has been corrected.
6	Corrective measures for incorrect display of Status Monitor version	On [Control Panel] > [Programs and Features], the version of Status Monitor is incorrectly displayed. This has been corrected.
7	Corrective measures for improper WebHelp display in a proxy environment	In a proxy environment, after selecting [Help] button from [Print Settings] screen and clicking any function, offline help is displayed instead of WebHelp. This has been corrected.

[CVE Reference No.] No CVE No. is supported this time.



KX Driver v8.5 Release Notes

Previous Updates

KX Driver v8.6.1022

Type	File name	Version
Driver	Kx86_UPD_8.6.1022_en_RC1_WHQL	8.6.1022

Details of Changes

No	Item	Content
8	Model support	<p>Supports all models:</p> <p><u>Kx86_UPD_8.6.1022_en_RC1_WHQL</u></p> <p>(Except the below models)</p> <p>ECOSYS MA2600cwx, MA2600cfx, MA2600cwx, PA2600cwx, PA2600cx, MA2101cwx, MA2101cfx, PA2101cwx, PA2101cx, MA3501wfx, MA3500wfx, MA3500fx, MA3500x, PA3500wfx, PA3500x, TASKalfa MZ7001ci, MZ6001ci, MZ5001ci, MZ4001ci, MZ3501ci, MZ2501ci, MZ7001i, MZ6001i, MZ5001i, MZ4001i.</p>
9	Support for 4-page N-up printing and booklet combination	Printing that combines 4-page N-up and booklet functions is supported.
10	Booklet printing with mixed A3/A4 paper	Booklet printing with mixed A3 and A4 paper sizes is supported. Output paper size is unified to the size selected by the user.
11	Abolition of restriction control for paper/fold settings	<p>Restriction processing for the following combinations is abolished, and error messages are displayed during job execution:</p> <ul style="list-style-type: none"> - Paper size and fold settings - Paper type and fold settings - Paper weight and fold settings
12	Corrective measures for misalignment during envelope printing	When printing envelope [Nagagata No.3] from KX Driver on ECOSYS P4060dn with [Paper Source] set to [Manual Feed Tray], misalignment and PCL XL Warning might occur. This has been corrected.
13	Corrective measures for job save info inheritance failure when changing Excel extension	When changing Excel file extension from uppercase (.XLS) to lowercase (.xls), job save info might not be inherited in KX Driver. This has been corrected.
14	Corrective measures for forced termination when adding custom size with manual feed tray	When [Paper Source] is set to [Multi Purpose Tray], and [Custom] is selected for the original size, pressing the [Add] button might cause the properties screen to forcibly close.
15	ReadMe file support	Modified to include ReadMe file in the package.

KX Driver v8.5 Release Notes

No	Item	Content
16	Corrective measures for fold-in-three setting retention failure	Even when [Fold-in-three] > [Print side: Outside] > [Folding direction: Right -> Left] is set, reopening the print settings changes it to [Print side: Inside] > [Left -> Right]. This has been corrected. Also, saving this setting even in environments without Z-fold unit is supported.
17	Corrective measures for paper size lock function failure during Excel printing	When printing the entire workbook in an Excel file, the [Paper Size Lock] setting in the application-side print settings might not function even if it is enabled. This has been corrected so that the setting becomes effective only when configured from [Devices and Printers], and [Paper Size Lock] is grayed out in the application-side print settings.
18	Corrective measures for initialization of settings during upgrade	When upgrading KX Driver to version 8.5 or later, the monochrome setting might be changed to full color, and other settings might also be reset. This has been corrected.
19	Change of default print quality setting	When printing with default settings from KX Driver on the following models, print speed might be half the normal speed. Because the default quality setting was [High Quality] (1200dpi), it is changed to [Standard] to enable normal speed. Applicable models: ECOSYS MA2101cwf, MA2101cfx, PA2101cwx, PA2101cx *Same change as Service Bulletin No. SWDR-0054(P039) No.1.
20	Corrective measures for print preview display failure	Even when [Print Preview] is unchecked in the print settings, the preview might still be displayed during printing. This has been corrected.
21	Corrective measures for missing options after enabling staple setting	After enabling [Staple] in the [Finishing] tab, switching to another tab and returning to [Finishing] might cause some options to disappear. This has been corrected.
22	Corrective measures for save warning dialog failure after watermark setting	After configuring watermark settings and selecting [OK], a save warning dialog appears. Clicking the [X] button at the top right of the dialog might not close it. This has been corrected.
23	Corrective measures for checkbox malfunction when setting cover and back cover	In the [Cover/Interleaf] tab, when [Add Cover] is set to [Cover and Back Cover] and the back cover feed source is set to [OHP Film], the checkbox for [Back Cover: Outside] remains enabled. It is corrected to disable the checkbox.
24	Corrective measures for lock setting reflection failure via Driver Distributor	When installing and configuring KX Driver via Driver Distributor, [Profile] > [Lock Settings] might not be reflected correctly. This has been corrected.
25	Corrective measures for device information acquisition failure via auto setting	The auto setting function of KX Driver might not operate properly, resulting in failure to acquire device information. This has been corrected.



KX Driver v8.5 Release Notes

No	Item	Content
26	Corrective measures for duplex printing failure when booklet is OFF	When [Booklet] setting is OFF, duplex printing is also automatically turned OFF. However, the first page prints single-sided, and subsequent pages print as booklet. This has been corrected.
27	Corrective measures for file save failure during private print	When [Private Print] is selected, the password prompt appears, but the print is executed and the file is not saved in the device's [Private Print]. This has been corrected.
28	Corrective measures for help display failure on SNMP settings screen	On the SNMP settings screen, even in environments where the PC is connected to the internet, selecting the [Help] button might display offline help instead of WebHelp. This has been corrected.
29	Corrective measures for crash during login user name list import	Importing login user name list files (.kxc, .txt) into KX Driver might cause it to crash. This has been corrected.
30	Corrective measures for halftone default value display failure in monochrome mode	When [Monochrome] mode is selected in the [Print Quality] tab of KX Driver, the halftone default value might be displayed as [Text: Normal]. This has been corrected.

[CVE Reference No.] No CVE No. is supported this time.

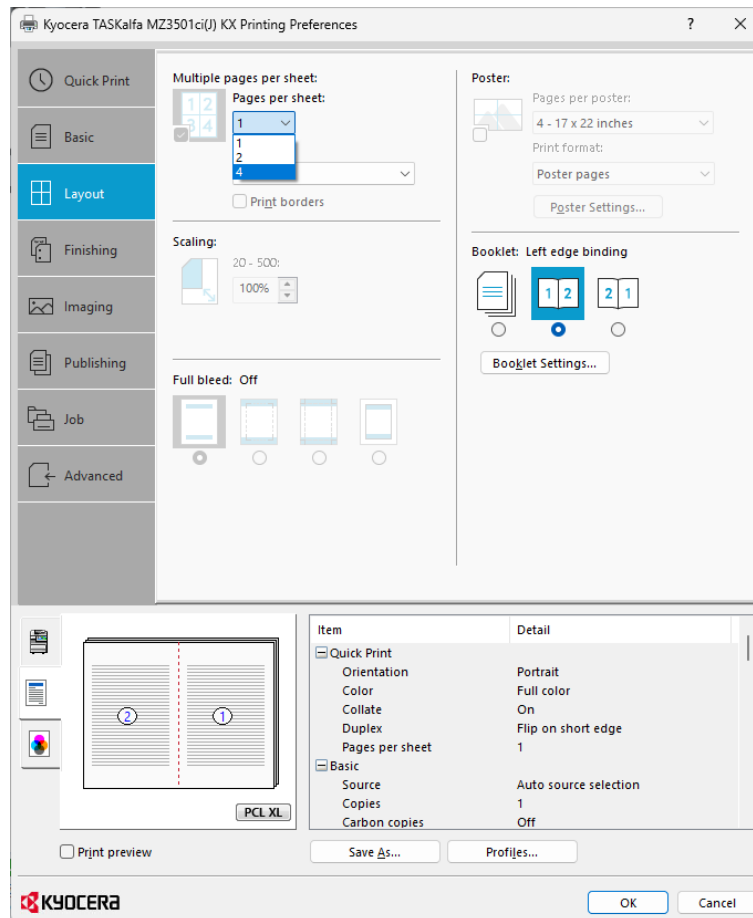
KX Driver v8.5 Release Notes

Added functions of KX Driver v8.6

The following changes were made in KX Driver v8.6.

Add Booklet 4-up to KX Driver

KX Driver v8.6 now supports printing with a 4-up (4 pages per sheet) combined with the booklet fold feature.



Support mixed size output to booklet-fold printing

KX Driver v8.6 now supports booklet-fold printing for documents containing mixed A3 and A4 page sizes. The printed output will be unified to the selected paper size.

KX Driver v8.5 Release Notes

Previous Updates

KX Driver v8.5.2013

Type	File name	Version
Driver	Kx85_UPD_8.5.2013_en_RC10_WHQL	8.5.2013

Details of Changes

No	Items	Contents
1	Model support	<p>The models below are newly supported.</p> <p>Kx85_UPD_8.5.2013_en_RC10_WHQL ECOSYS MA4000cix, ECOSYS MA4000cifx, ECOSYS MA3500cifx, ECOSYS PA4500cx, ECOSYS PA4000cx, ECOSYS PA3500cx, ECOSYS MA3500cix, TASKalfa MA4500ci, TASKalfa MA3500ci, TASKalfa PA4500ci, ECOSYS MA4000x, ECOSYS MA4000fx, ECOSYS MA4000wfx, ECOSYS MA4000wifx, ECOSYS PA4000x, ECOSYS PA4000wx</p>
2	Addition of WebHelp feature	The WebHelp feature is newly implemented to replace the current help feature.
3	Support for simultaneous use of booklet and 2-up printing	The simultaneous use of booklet print settings and 2-up printing (two pages per sheet) is supported.
4	Addition of print size lock feature	The print size lock feature is added. The output size is fixed to a specific size set by the user, and all documents containing mixed paper sizes are automatically enlarged or reduced to the specified size for output.
5	Addition of color printing restriction function	A feature to restrict color printing by user login and department management is added. When this feature is enabled, the user is required to enter a username and password for color printing. (Password is not required for monochrome printing.)
6	Update of KX SDK/ Update of API	- KX SDK is updated. - API is updated.
7	Update of Visual C++ Redistributable	Visual C++ Redistributable (x86, x64, ARM64, 2015-2022) is merged in the KX Driver installer.
8	Strengthening the password <ECOSYS MA4000wifx series and next development models>	<p>The specification for the user login password is changed as follows for ECOSYS MA4000wifx series and the next development models.</p> <p>- Password length: Up to 256 characters - Up to 4 bytes of UTF-8 are supported.</p>
9	Support for PJP password encryption <ECOSYS MA4000 series and next development models for A4 color printer>	To enhance security, the PJP passwords for job transmission is encrypted in ECOSYS MA4000 series and the next development models for A4 color printer.

KX Driver v8.5 Release Notes

No	Items	Contents
10	Addition of sharpness feature <ECOSYS MA4000 series only>	In ECOSYS MA4000 series, the sharpness feature is supported.
11	Corrective measure for the printing failure	When [Duplex printing] is set to ON (long edge binding) and [Skip blank pages] is set to ON in the print settings, sometimes, nothing is printed. This has been corrected.
12	Update of ReadMe	When converting a PDF file to PDF again using KX Driver, it might not become a searchable PDF and OCR processing cannot be performed. Therefore, this information is added to the ReadMe.
13	Corrective measures for blank display of device options list	When using ARM version of KX Driver, opening [Device Settings] tab from [Printer Properties] causes the [Device Options] label and list to be displayed as blank. This has been corrected.
14	Corrective measures for paper source setting issues	When setting the paper source to the MP tray and printing a specific Word file, the paper is fed from the cassette set as the default source on the device. This has been corrected.
15	Corrective measures for error display when switching from KXv4 to KXv3	When creating a print queue with the KXv4 Driver, opening [Advanced] tab from [Printer Properties], and switching the driver to KXv3 Driver, an error is displayed. This has been corrected.
16	Corrective measures for freezing when printing Office files	When opening [Advanced] tab from [Printer Properties] and unchecking [Enable advanced printing features], if the MP tray is set as the paper source and printing from a Microsoft Office application, the application freezes. This has been corrected.
17	Corrective measures for queue/LPR configuration issues during KX Driver installation	When creating an installation package with IP address, queue, and LPR settings for the installation of KX Driver 8.4, the queue and LPR are not transferred after installation. This has been corrected.

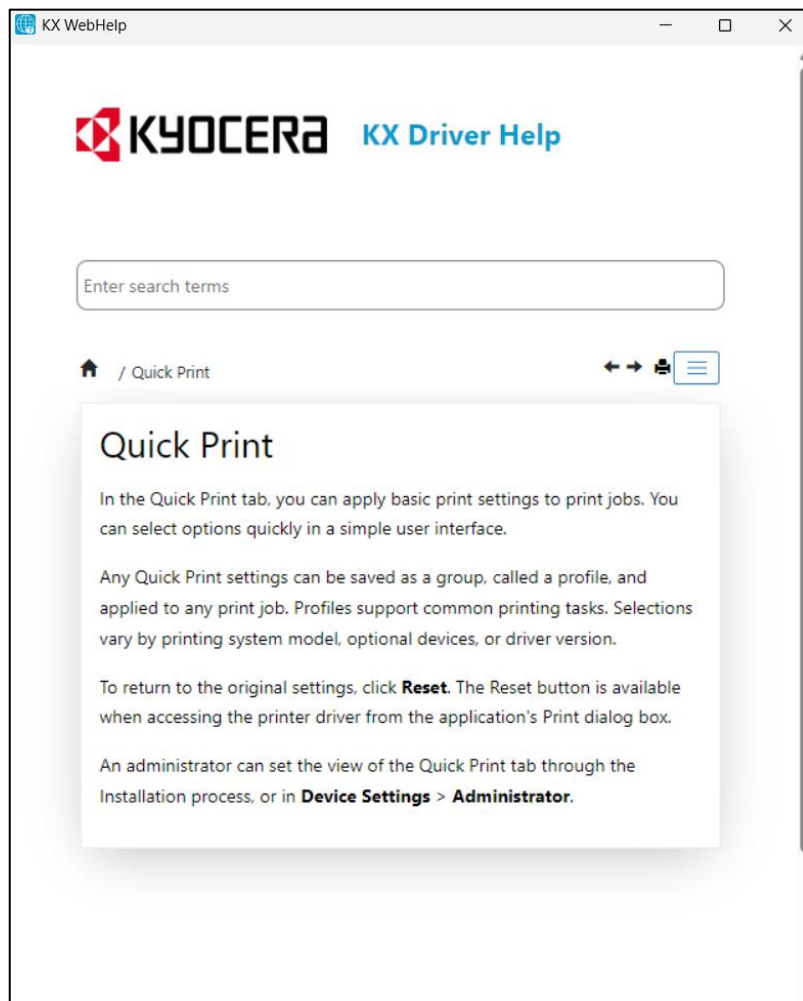
[CVE Reference No.] No CVE No. is supported this time.

KX Driver v8.5 Release Notes

Added functions of KX Driver v8.5

Implementing WebHelp

KX Driver v8.5 and later includes a new system called WebHelp, which replaces the existing Help system. Invokes WebHelp when the user requests help on a dialog or control in the user interface and displays an easy-to-read Help topic.



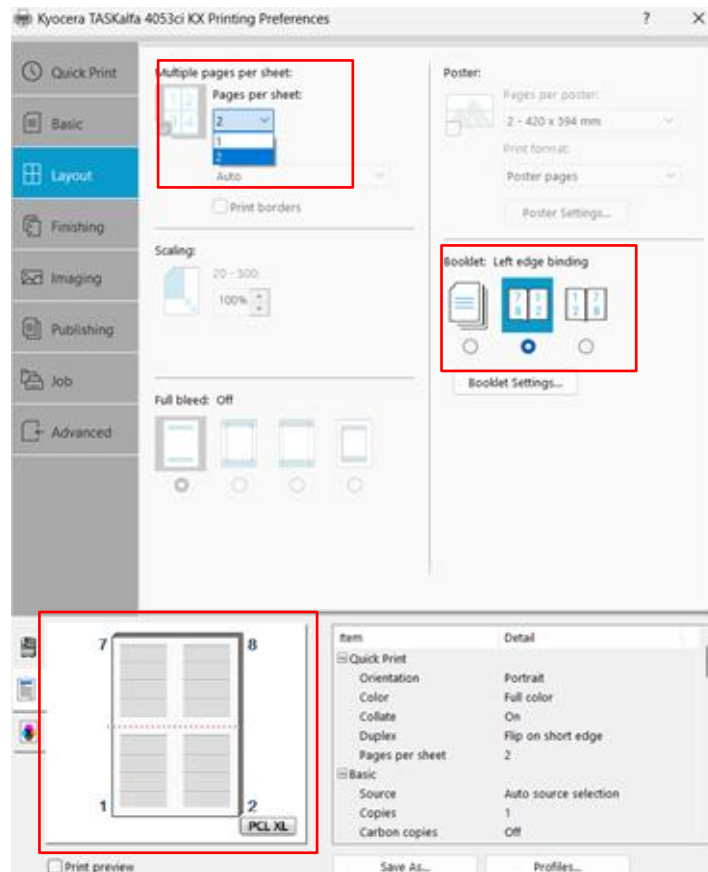
WebHelp supports the following languages:

- English
- Japanese
- French
- Italian
- Portuguese (Brazil)
- Spanish
- German
- Dutch
- Russian
- Korean
- Chinese (Simplified)

KX Driver v8.5 Release Notes

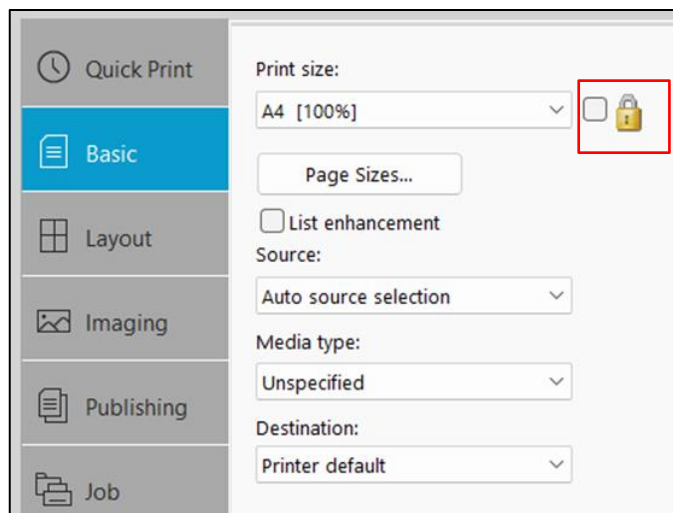
Support for "Multiple pages per sheet" printing with "booklet" selected

In KX Driver v8.5, it is possible to perform "Multiple pages per sheet" when "booklet" is selected. Only two pages per sheet (2-up) and booklet will be supported.



Support for print size lock function

The KX Driver v8.5 supports a fixed output paper size function. By enabling this feature, the print size is always fixed to a specific paper size set by the user, and all documents, including documents with mixed paper sizes, are automatically scaled to the size set by the user.



KX Driver v8.5 Release Notes

Add prompt for color printing on user login and job accounting.

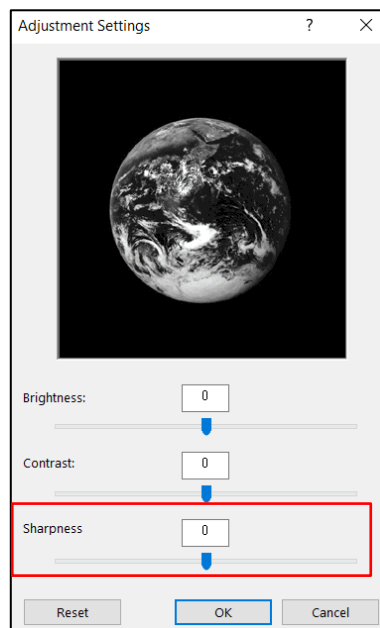
KX Driver v8.5 adds the ability to restrict color printing by user login and department management. By enabling this function, you need to log in by entering the user name and password only for color printing. For monochrome printing, you can print without entering the password.

Enhanced print job security (PJM Password Encryption)

KX Driver v8.5 now sends encrypted passwords (PJM Password Encryption) to strengthen security. This feature is performed automatically with models which the MFP supports PJM password encryption. Support models are Libra2/Sirius2 and later models. Please refer to the product specification for other compatible models.

Sharpness Feature Support (Next new models)

The KX Driver v8.5 supports the Sharpness feature. KX Driver v8.5 supports the sharpness function only for Libra2. This feature is enabled only when Photo is selected; Text and Graphic do not enable the sharpness feature.



KX Driver v8.5 Release Notes

Previous Updates

KX Driver v8.4.1716

Type	File name	Version
Driver	Kx84_UPD_8.4.1716_en_RC5_WHQL	8.4.1716

No.	Items	Contents
1	Security enhancement	The following is corrected for the security enhancement. [Security enhancement] When registering Windows service, if the execution path is not enclosed in the double quotations (""), the malicious program might be installed and executed.
2	Model support	The models below are newly supported. PA6000x, PA5500x, PA5000x, PA4500x, MA6000ifx, MA5500ifx, MA4500ifx, MA4500ix, MA4500fx, MA4500x
3	Update of the SNMPv3 settings	The following is added to the authentication for the SNMPv3 settings - SHA-224, SHA-256, SHA-384, SHA-512 The password setting is added to privacy.
4	Support of the Batch copy	The following are supported as batch copy. - Paper sizes: 216x340mm, Kakugata2, Nagagata3, Nagagata4, Younaga3 - Paper source: High capacity paper feeder (Bulk feeder)
5	Remove Data Collection	Remove Data Collection because the data analytics service for this feature will be going away.
6	Countermeasure for setting of color/black and white mode in the print menu	When setting full color as the default in KX Driver and select black and white in Microsoft Edge to print, the setting is not reflected and the print will be in color. This has been corrected.
7	Correction of the account ID display	When entering Account ID, the input values are now masked by asterisks (*).
8	Countermeasure for PCL XL error	PCL XL error occurs on P4040dn series. This has been corrected.
9	Countermeasure for the image failure of printing unnecessary lines	When the PDL setting of the KX driver is "PCL XL", printing from the CAD software produces unnecessary lines that are not displayed in the print preview screen. This has been corrected.
10	Support of the printer font display	When installing the KX Driver of the P8060cdn, the printer font does not appear in the column of [Available device fonts] even though pressing [Substitute with device fonts]. This has been corrected.

KX Driver v8.5 Release Notes

No.	Items	Contents
11	Countermeasure for the error message	<p>When opening a PDF file containing a mixture of A4 and A3 sizes on a PC and print it with [Engineering Fold], [staple] and [punch] settings in the printer driver properties, an error message is displayed and it does not output as set. This has been corrected.</p> <p>(Note) The device controller firmware is also upgraded. The firmware upgrade was informed per Service Bulletin No. 2XD-0084 (N113).</p>
12	Countermeasure for the print failure when applying the profiles	When printing after applying the profile setting to black and white printing with the KX Driver, it is printed in color. This has been corrected.
13	Correction of the print settings notation	When installing the KX driver on a model that does not support Back Cover paper feeding, the string of cover mode in [Printing Preferences] are incorrect. This has been corrected.
14	Countermeasure for displaying the SNMP setting button	SNMP Settings button does not appear in [Device settings tab] > [Administrator Settings] on Win11ARMx64. This has been corrected.
15	Countermeasure for the device option setting failure	The device options are not set correctly after installing the KX driver via SNMPv3 protocol. This has been corrected.
16	Correction of the custom quality settings	The default value of the resolution in Custom Quality Settings is not set to the one in Control Panel after resetting Quality Settings. This has been corrected.
17	Correction of the save dialog display	Custom box details appear in the save dialog of the profile in Printing preference when the SD card is installed. This has been corrected.
18	Correction of the profile display	The details of the watermark set are still displayed in the save dialog of the profile even if deleting the plug-in. This has been corrected.
19	Correction of the dialog display	":" does not appear after [Duplex] in the Profile Details dialog This has been corrected.
20	Correction of the check box	If resetting the Print Quality back to Standard and select to Custom, no resolution check box is checked in Custom Quality Settings. This has been corrected.
21	Correction of the Cover Mode setting	Resetting Cover Mode to default does not reflect the setting in Control Panel. This has been corrected.
22	Correction for the output paper size display	When changing PDL to PDF in the print settings screen and check the output paper size, Kakugata2, Nagagata3, Nagagata4 and Younaga3 do not appear. This has been corrected.
23	Countermeasure for the property crash	Executing [Property] > [Device] > [Start Auto Setting] > [OK] in printer driver, property may crash. This has been corrected.

KX Driver v8.5 Release Notes

Previous Changes

KX Driver v8.3.0815

Type	File name	Version
Driver	Kx83_UPD_8.3.0815_RC5_en	8.3.0815

Details of Changes

No.	Items	Contents
1	Model support	The models below are newly supported. TASKalfa 7054ci, TASKalfa 6054ci, TASKalfa 5054ci, TASKalfa 4054ci, TASKalfa 7004i, TASKalfa 6004i, TASKalfa 5004i, TASKalfa 4004i, TASKalfa MZ4000i, TASKalfa MZ3200i, MA2100cwf.
2	Adding new function	The inserter (1,2) and Z-folding are added to the device option to support TASKalfa 7054ci series.
3	Corrective measure for the failure of the authentication for KNM plug-in.	If the password for KNM plug-in includes "&", "!" or "#" etc., the authentication fails.
4	Corrective measure for the problem that a part of check boxes on [Administrator Settings] is grayed out	The check box for [Hide lower pane] on the General tab of [Device Settings] > [Administrator Settings] in KX driver might be grayed out depending on the resolution of the display.
5	Corrective measure for the printing/setting failures on the cover mode	The following phenomena might occur when printing on the cover mode. [Phenomena] - The cover is not printed at the correct position. - The booklet with staple setting is grayed out on the print setting of the application.
6	Corrective measure for the failure of feeding when using the cover mode	When using the cover mode, the cover sheet and the back cover sheet are not fed from the MP tray but fed from the cassette although the source is set to [MP tray].
7	Corrective measure for a lack of the print data and the wrong orientation printing	When printing a file from applications including Word, Excel, Power Point etc., a part of the print data might be lacked, or it might be printed at the wrong orientation.
8	Corrective measure for the inability to input the Chinese characters on [Login user]	When Chinese characters are input on [Login user] in [User Login], the input content is deleted after pressing the Enter key.
9	Corrective measure for the printing failure when KPD L is set	When setting PDL to KPD L on KX driver and carry out printing, an application error might appear and the printing cannot be carried out.

KX Driver v8.5 Release Notes

No.	Items	Contents
10	Corrective measure for the failure when carrying out the duplex print of Excel file with page combine setting (2in1)	When carrying out the duplex print of an Excel file while setting the combine of four work sheets into one page (2in1), it might not be printed correctly.
11	Corrective measure for the problem that a blank page appears on the last page on the preview	When printing the originals whose total page is odd as duplex, a blank page appears on the last page on the preview of KX driver. (This phenomenon occurs only on the preview. The blank page is actually not printed.)
12	Corrective measure for the failure of drawing by PCL	A failure might occur on drawing a part of shapes (lines) by PCL.
13	Corrective measure for the problem that one set of originals is printed as several booklets	When printing a whole Excel book as booklet with A3 size, it is not printed as one booklet but divided into several booklets if the duplex print is set as the default on the KX driver.
14	Corrective measure for an abnormal image when setting PCL XL	When PCL XL is set, an extra line might be printed.
15	Corrective measure for the problem that the button is disabled when setting the user login M3860idnf series and TASKalfa 508ci series	When closing and re-opening the window after enabling [User Login] of [Device Settings] -> [Administrator] and registering the user, [edit] and [delete] buttons are disabled under the condition below. [Condition] At least one or more user are registered using the user login.
16	Corrective measure for the inability of the booklet feature M3860idnf series and TASKalfa 508ci series	When setting the folding to the imported data, the booklet feature is disabled.
17	Corrective measure for the inability of the staple feature M3860idnf series	When the profile of Rotate collate is imported and applied on [Finishing] setting, the staple feature is disabled.



KX Driver v8.5 Release Notes

Previous Updates

KX Driver v8.2.0623

Type	File name	Version
Driver	Kx82_UPD_8.2.0623_RC9	8.2.0623

Details of Changes

No	Item	Content/Corrections
18	Model support	Following models are supported. [KYOCERA] 3554ci/2554ci
19	TLS1.1 / TLS 1.2 support	TLS1.1 / TLS 1.2 are supported.
20	ARM64 support	ARM64 for Windows10 is supported. = Note the following restrictions. = · Plug-in Modules, Net Manager and KX DRIVER for Universal Printing are not usable on Windows 10 ARM 64. · ARM 64 driver cannot be additionally installed and the printer settings cannot be changed on Windows 10 version 1909 or before in the client server environment.
21	Corrective measures for the print failure with a large volume print	When printing a large volume, characters might not be printed and output images might be incomplete.
22	Corrective measures for the paper output failure	Paper might not be ejected to the designated paper output tray.
23	Correction of the preview function	When intended to print 1-page data in duplex with the KX driver, the printer does not operate the duplex print, however, if printing with the preview function, the number of data page becomes 2 and the number of print page becomes 2/2 with the duplex print operation. (Note the total counter does not count up by 2.)
24	Correction on changing the driver name	If the driver name is changed, KX Driver might not be able to retrieve the job account code.
25	Correct the cover page setting	When setting front cover and back cover in the cover page setting, paper is fed for the back cover from the default paper source while the paper is set to the MP tray.

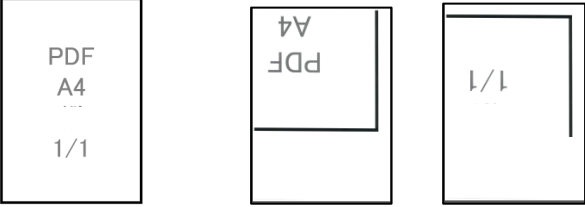
KX Driver v8.5 Release Notes

Previous Updates

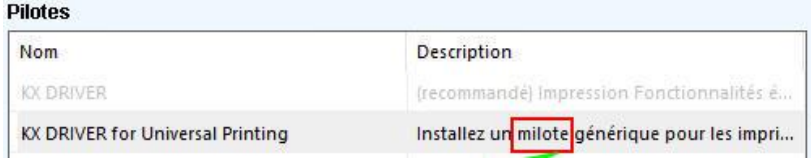
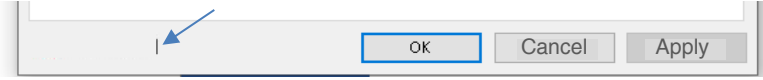
KX Driver v8.1.0923

Type	File name	Version
Driver	Kx81_UPD_8.1.0923_RC4b	8.1.0923

Details of Changes

No	Item	Descriptions
1	Model support	New Model Support
2	Corrective measures for incorrect number of copy information in KNM	When setting [Hide other than Quick Print tab], the information of the number of pages and copies might not be displayed correctly in the KNM job tab.
3	Corrective measures for a poster printing error	<p>The poster printing result might not be correct. Example) When set to divide into two, the result is not correct.</p> <p>[Original]</p> 
4	Corrective measures for the PCLXL error	When printing single-page data with footer in duplex, a PCLXL error might occur.
5	Corrective measures for the return value for a certain software	When multiple page print per sheet is set in the duplex print, [Simplex] is displayed in the job history on a certain software.
6	Corrective measures for the error in use of watermark	When printing a certain file containing a macro using the watermark function, the macro text portion in page 2 and after might be faint.

KX Driver v8.5 Release Notes

No	Item	Descriptions						
7	Corrective measures for BF-720 not added in Device Settings	BF-720 cannot not be added to Device Settings (Printer Properties).						
8	Correct French translation	<p>French translation error is corrected. Before) milote After) pilote</p>  <table border="1" style="margin-left: 20px;"> <thead> <tr> <th>Nom</th> <th>Description</th> </tr> </thead> <tbody> <tr> <td>KX DRIVER</td> <td>(recommandé) Impression Fonctionnalités é...</td> </tr> <tr> <td>KX DRIVER for Universal Printing</td> <td>Installez un milote générique pour les impri...</td> </tr> </tbody> </table>	Nom	Description	KX DRIVER	(recommandé) Impression Fonctionnalités é...	KX DRIVER for Universal Printing	Installez un milote générique pour les impri...
Nom	Description							
KX DRIVER	(recommandé) Impression Fonctionnalités é...							
KX DRIVER for Universal Printing	Installez un milote générique pour les impri...							
9	Corrective measures for thin lines	<p>When opening [Device Settings] in the properties screen and changing it to Other tab, a thin line appears at the right side of the [Kyocera logo].</p> 						
10	Change the default profile setting display	<p>If installing the driver with the default setting of Duplex On, the default property setting of Quick Print tab in Printer Properties differs from the driver setting.</p> <p>Default profile setting ----- Duplex: Off Driver setting display ----- Duplex: Long edge bind [Change] Default profile setting is set to Off.</p>						
11	Corrective measures for inability to set the job accounting code	The job accounting code might not be able to set up. This is corrected.						



KX Driver v8.5 Release Notes

Previous Changes

The KX Driver has been updated to 7.5.0807.

No	Item	Content
1	Model support	(Support for future models)
2	Change the description of [Duplex Print] setting (Additional change of No 16 with previous version)	The description of the checkbox [Enable Duplex Print] displayed in the installer is changed as follows. [Enable Duplex Print] → [Set Duplex Print as Default]
3	Corrective measures for the installation error in the client server environment	When installing the driver in the client server environment, the sequence of the internal process to install it in the client PC is not correct and an error code [0x00000057] occurs at both the server and client. This has been corrected.



KX Driver v8.5 Release Notes

Previous Updates

The KX Driver has been updated to 7.5.0617.

Details of Changes

No	Item	Content																																
4	New model support	Support for new models																																
5	Corrective measures for slow operation of KX driver's properties screen	When processing the 3D image, unexpected values might be input in the setting values for the API trigger and there might be a delay in the setting values for the application and driver controlled by the OS. To correct this, a process is added to initialize the setting values at the API trigger.																																
6	Corrective measures for the disappearance of the 1st character of the user name in accounting	This has not been fixed and has been added as restrictions in README																																
7	Corrective measures for the driver lock-up issue	The driver might lock up if opening the setting screen of the KX driver to set up the job accounting ID from the client PC using a Hebrew OS in the client and server environment.																																
8	Corrective measures for the failure at Private Print	When executing private print with a long file name, the 2nd print is not saved.																																
9	Corrective measures for the KNM job tab	If setting [Show Quick print tab] at the KX driver's administrator setting, the number of pages and copies might not be displayed properly at the KNM job tab. This has been corrected.																																
10	Corrective measures for the poster printing 1	When executing the poster printing with the PDL set to PDF/KPDL, the result might not be proper. This has been corrected.																																
11	Corrective measures for the poster printing 2	With a 6052ci series device, the poster printing 2x1 mode for A3 size can be selected and the print might not be correct. This has been corrected.																																
12	Corrective measures for the poster printing 3	When printing A4 size in the 1x2 poster printing mode, output size should be A3 but it is changed to SRA3 and the image is printed off the paper.																																
13	Corrective measures for print from Chrome issue 1	When printing from Chrome using the KX driver, full color might be printed when 2-color mode is set.																																
14	Corrective measures for print from Chrome issue 2	When printing from Chrome with the ADMIN lock settings and password setting set to B&W in the KX driver, after entering the password and selecting color mode, the print is still output in B&W.																																
15	<p>Add [Switch Powerpoint print mode] setting</p> <p>Following is to reach [Switch Powerpoint print mode]</p> <p>KX driver properties > Device setting > Compatibility</p> <p>Refer to FIG1</p>	<p>If enabling [Switch PowerPoint print mode], priority is always given to the color setting at Powerpoint in any KX driver setting.</p> <table border="1" style="margin-left: auto; margin-right: auto;"> <thead> <tr> <th colspan="2"></th> <th colspan="2">Output by [Switch PowerPoint print mode] setting</th> </tr> <tr> <th>KX driver color setting</th> <th>Powerpoint color setting</th> <th>Disabled (before change/default)</th> <th>Enabled</th> </tr> </thead> <tbody> <tr> <td>Full color</td> <td>Color</td> <td>Full color</td> <td>Full color</td> </tr> <tr> <td>Full color</td> <td>Grayscale</td> <td>Full color</td> <td>Grayscale</td> </tr> <tr> <td>Full color</td> <td>Black and white</td> <td>Full color</td> <td>Grayscale</td> </tr> <tr> <td>Black</td> <td>Color</td> <td>Grayscale</td> <td>Full color</td> </tr> <tr> <td>Black</td> <td>Grayscale</td> <td>Grayscale</td> <td>Grayscale</td> </tr> <tr> <td>Black</td> <td>Black and white</td> <td>Grayscale</td> <td>Grayscale</td> </tr> </tbody> </table>			Output by [Switch PowerPoint print mode] setting		KX driver color setting	Powerpoint color setting	Disabled (before change/default)	Enabled	Full color	Color	Full color	Full color	Full color	Grayscale	Full color	Grayscale	Full color	Black and white	Full color	Grayscale	Black	Color	Grayscale	Full color	Black	Grayscale	Grayscale	Grayscale	Black	Black and white	Grayscale	Grayscale
		Output by [Switch PowerPoint print mode] setting																																
KX driver color setting	Powerpoint color setting	Disabled (before change/default)	Enabled																															
Full color	Color	Full color	Full color																															
Full color	Grayscale	Full color	Grayscale																															
Full color	Black and white	Full color	Grayscale																															
Black	Color	Grayscale	Full color																															
Black	Grayscale	Grayscale	Grayscale																															
Black	Black and white	Grayscale	Grayscale																															
16	<p>Energy Star V3 support</p> <p>Refer to FIG2</p>	<p>As a part of support for Energy Star V3, the checkbox of [Enable duplex print] (checked at the default setting) is implemented to appear before completing the driver installation This enables duplex print as the default setting when printing in the KX driver.</p>																																

KX Driver v8.5 Release Notes

No	Item	Content
17	Corrective measures for inability of [High quality] setting Refer to FIG3	Even if setting [High quality] in Graphics setting, it is processed in the default setting of [Smaller file size] depending on color model.

FIG1

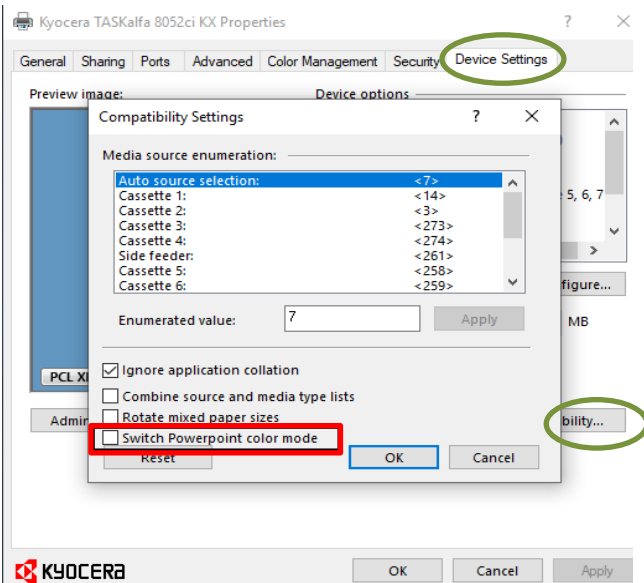


FIG2

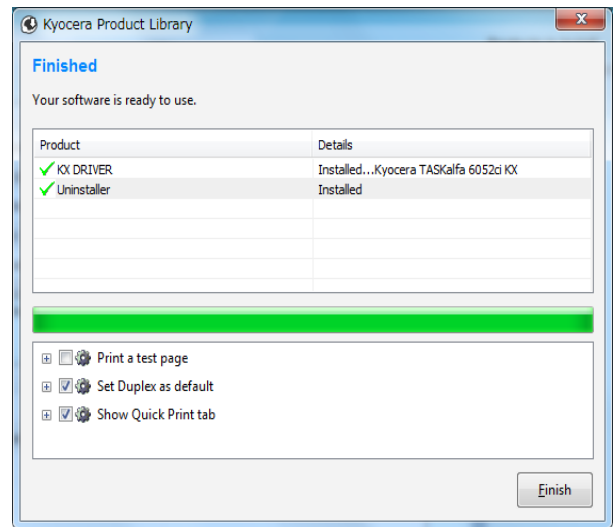


FIG3

